



Consultant Compensation PLAN

Join the *Get On The Bands* Revolution and Earn
Spare, Part Time, Full Time, even Lifestyle Income!



Effective Date: January 1, 2022

B3 Sciences has a unique and innovative Compensation Plan that allows you to earn Commissions and Bonuses at every stage of your B3 Business. The dynamic features of the Plan include:

- **Customer Sales Bonuses**
- **New Consultant First Order Bonuses**
- **3 x 8 Matrix Commissions**
- **2 Million Dollar Rank Bonuses**
- **Leader Bonus Pools**
- **Special Promotions**



Enrollment Step 1:

The only requirement to become a B3 Consultant is the purchase of a Success Kit and complete an enrollment application. To qualify for maximum Commissions and Bonuses, consider Enrollment Steps 2 and 3.

Enrollment Step 2:

Purchase an optional First Order Package of B3 products to ensure your success. This product package will provide you with products for personal use, inventory, sharing with family, and sampling with prospects.

Enrollment Step 3:

Secure your B3 Business and stay active each month for maximum commissions by enrolling on the optional Monthly Autoship Program. Your monthly order ensures you are qualified with Personal Volume to be active for commissions.

First Order Package Options

Consultant Package - \$639.99

- Qualifies Consultant at Tier 500

Consultant Founder Package - \$1299.99

- Qualifies Consultant at Tier 1000

Consultant Sales Tier Levels

Sales Tier Levels	Personal Sales Req	Placed in Tree	Customer Bonus	Retail Achiever Bonus	First Order Bonus	First Order 8 Generation Bonus	Rank Bonus	Leader Pools	Matrix Expansion
Tier 1000	1000 PV	YES	20%	5% - 7.5%	15%	YES	YES	YES	YES
Tier 500	500 PV	YES	20%	5% - 7.5%	15%	YES	NO	NO	NO
Kit Only or Not Active	0 PV	YES	10%	NO	10%	NO	NO	NO	NO

- Consultants are eligible to earn commissions and bonuses by 1) completing a Consultant application 2) purchasing a Consultant Success Kit, and 3) accumulating Personal Sales
- Consultants may choose to purchase an optional First Order inventory purchase or earn Sales Levels by accumulating personal sales
- Purchase of the 30-Day Test Drive Pack (\$639.99) qualifies Consultants at the Tier 500 Level.
- Purchase of the Founder Package (\$1299.99) qualified Consultants at the Tier 1000 Level

Upgrade Option:

- Consultants can upgrade to a higher Tier level within 30 days of their enrollment date through a purchase of an additional inventory package. Contact Customer Service for more information



Customer Bonuses

Retail Customer Sales Bonus

When Customers purchase from your B3 website, you earn up to 20% on the BV (Bonus Volume) of their order.

Example: A Customer order for a set of B3 Bands. 400 BV x 20% = \$80.00 Customer Bonus

Retail Achiever Customer Bonus

Sell \$1000 or more in Customer Sales from your website and earn an additional 5%

Sell \$2000 or more in Customer Sales from your website and earn an additional 7.5%

Professional Customer Sales Bonus

Earn the same Bonuses listed above (up to 20% + 7.5%) by making sales to Professionals such as Health Professionals, Teams, Gyms, etc.

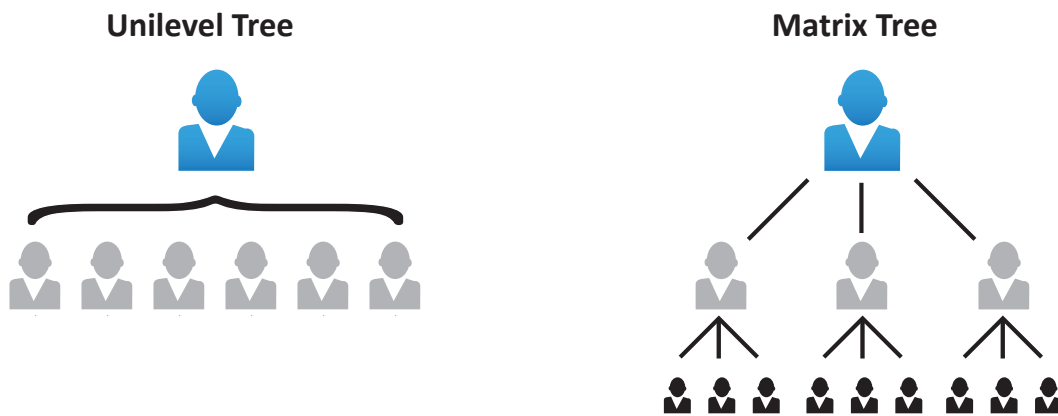
International Customer Sales Bonus

Earn the same Bonuses listed above (up to 20% + 7.5%) by making sales to International Customers outside of the USA.

The B3 Dual Tree Commissions System

Unilevel and Matrix Trees

B3 Sciences gives you the best of two different compensations plan structures to ensure your success. When you sponsor new Consultants, they will be placed in both your Unilevel and your Matrix Tree.



Unilevel Tree

The Unilevel Tree gives you an unlimited number of front row positions for you to sponsor as many Consultants as you can.

Each time you sponsor a new Consultant they are placed on your first row of your Unilevel, then you are eligible to earn 8 Levels of Commissions in your Unilevel Tree.

All First Order Packages and Upgrade Packages generate commissions in the Unilevel Tree. Additional Consultant Orders and their Customers orders generate commissions in the Matrix Tree only.

* You cannot request special placement in the Unilevel Tree

Matrix Tree

Your second Tree is called the Matrix Tree. This Tree has only 3 positions on your front row initially. Once your Front row of 3 positions is full with 3 Consultants, additional Consultants sponsored by you are placed on the 2nd row.

You are eligible to earn 8 Levels of Commissions in your Matrix Tree.

Every order placed by Consultants, including First Order Packages, and Customer orders generates commissions in the Matrix Tree. (Excluding Training, Sales & Marketing Aids)

We apply 'Dynamic Compression' in the Matrix Tree which means you are not penalized if a Consultant is 'Not Active' with personal sales volume.

The Matrix Tree SPILL Effect

The unique feature of the Matrix is the placing of New Consultants deeper than your first row, or what we call 'SPILL'.

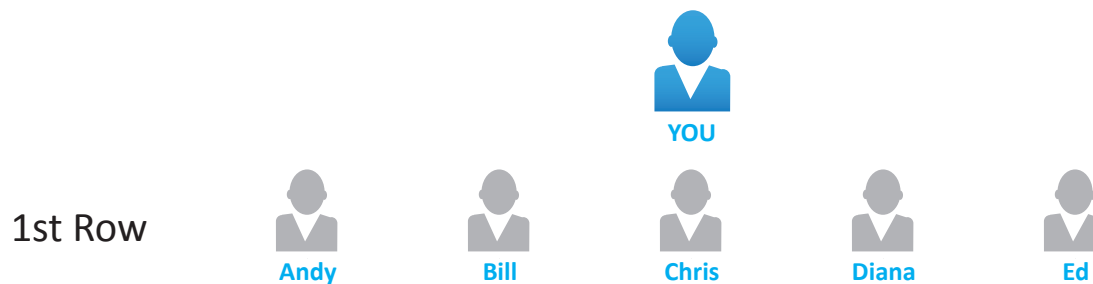
This SPILL occurs when a Consultant's first row is full, and they sponsor a new Consultant. The new Consultant is placed under the First Row and under a current Consultant.

SPILL also occurs when the sponsoring Consultant requests special placement of new Consultant's under and existing Consultant.

*When a Consultant in the Matrix Tree receives 'SPILL' he/she is eligible to earn Matrix Commissions on this new Consultants Order and all the future Sales that develop under that Consultant up to 8 rows in the Matrix Tree! *

Unilevel Tree Example:

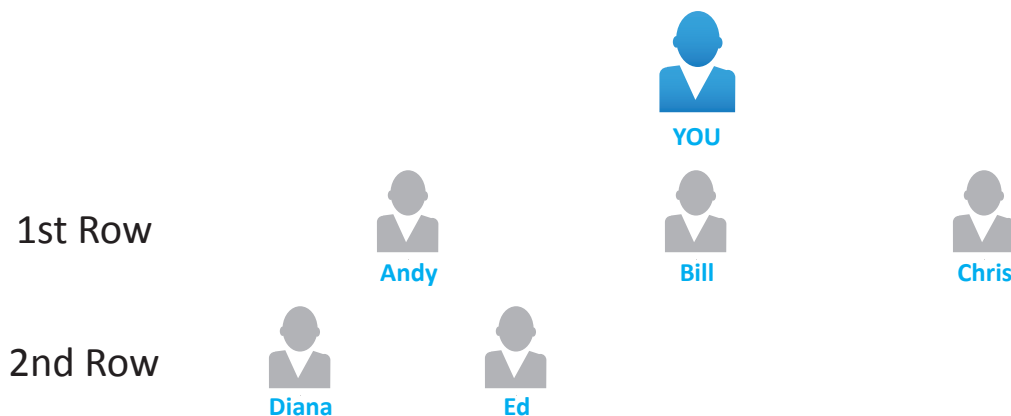
In the picture below you sponsor new Consultants Andy, Bill, Chris, Diana and Ed. They are all placed on your first row in your Unilevel Tree.



Matrix Tree Example:

In the picture below, you will see an example of how the 5 same Consultants are placed in your Matrix Tree.

*Diane and Ed are 'SPILLED' under Andy and Bill in the Matrix. Andy and Bill are eligible to earn Matrix Commissions on Diana's and Ed's orders and all future orders that develop in their 8 Level Matrix Tree'





You can choose where to place new Consultants in the Matrix Tree

When you Sponsor new Consultants, you can allow even placement of Consultants in your Matrix Tree by the B3 computers, or you can request special placement.

This gives you the ability to position Consultants so they can work in Teams that can maximize Consultants supporting each other.

*To request special placement, you must submit a special request email to support@b3sciences.com within 2 business days after the Consultant is enrolled. After 2 Business Days, the new Consultant’s position is final and cannot be changed *

Determining your Paid Rank with the Unilevel Tree

The Unilevel Tree is also used to calculate your monthly Paid Rank level. We calculate all the sales in your Unilevel Tree to infinity to determine your monthly Personal Group Sales Volume

* SPILL of new Consultants in your Matrix does not count towards your achieving a monthly Paid Rank*

First Order Team Bonuses

First Order Team Bonuses are paid on up to 8 Levels in the Unilevel Tree

This Bonus is generated on First Order Packages and Upgrade Packages purchased by Consultants.

Consultants must achieve the Rank listed in the table to be eligible for First Order Team bonuses on up to 8 levels in the Unilevel Tree.

Unilevel Tree	Bonus	Rank to Qualify
1 st Level (Sponsor)	15%	1
2 nd Level	5%	2
3 rd Level	3%	3
4 th Level	3%	4
5 th Level	3%	5
6 th Level	2%	6
7 th Level	2%	7
8 th Level	2%	8

Example: A New Founder Package is Ordered (BV = 1200)

If you are the Sponsor, you earn 15% x 1200 = \$180.00

If you are the 2nd level above, and at least Rank 2, you earn 5% x 1200 = \$60.00

If you are the 5th level above, and at least Rank 5, you earn 3% x 1200 = \$36.00

* The Unilevel Tree does not offer Dynamic Compression if a Consultant within 8 levels has not met the required Rank



Leaders Pools

Leader Bonus Pool

When B3 Consultants achieve new paid-as Leader Ranks, they are eligible to share in a 1.5% total company sales Leader Pool.

Founder Bonus Pool

When B3 Consultants enroll with a Founder Package purchase during the limited 'Founder' period, they are eligible to share in a 2% Founder Sales Pool. This in addition to the Leader Pool that Founders are also eligible for.



* The Founders Pool will be open only to Founders until October 2022. After that time, Consultants who are not Founders will also be eligible to participate in this 2% Pool.

Leader Pool Rank Table

	Rank B3	Rank B4	Rank B5	Rank B6	Rank B7	Rank B8	Rank B9	Rank B10	Rank B11	Rank B12
Leader Pool			5 pts	10	20	40	75	150	250	400
Founders Pool	1 pt	2.5 pts	5 pts	10	20	40	75	150	250	400

	Rank Diamond	Rank Double Diamond	Rank Black Diamond
Leader Pool	700 pts	1000 pts	1500 pts
Founders Pool	700 pts	1000 pts	1500 pts

Eligible Consultants earn points monthly when Rank is achieved. Individual points are divided into total points to determine a Consult's share of the pools. Pool is funded by monthly sales of B3 products.

Leader and Founder Pools are awarded only when previous year's calendar month sales are exceeded. Example: If May of 2021 sales exceed May of 2020 sales, May 2021 Leader and Founder Pools are paid out.

* **Active Rule:** Consultants must remain at Paid Rank 1 (Active) or higher on a monthly basis to be eligible for ongoing access to the Pools. If a Consultant is 'Not-Active' he/she will be given a 1 month grace and still be eligible for the Pools. If a Consultant is 'Not-Active' for a 2nd month, he/she forfeits access to the Pools forever.

Rank Table

	Rank B1	Rank B2	Rank B3	Rank B4	Rank B5	Rank B6
* PV (Personal Sales Volume)	50	50	50	50	50	50
** Actives	1	2	3	4	5	6
PGV (Group Sales Volume)	50	100	500	1000	5000	10,000
Leaders in Group				2 x Rank 2	2 x Rank 3	2 x Rank 4
	Rank B7	Rank B8	Rank B9	Rank 10	Rank B11	Rank B12
* PV (Personal Sales Volume)	50	50	50	50	50	50
** Actives	7	8	8	8	8	8
PGV (Group Sales Volume)	25,000	50,000	100,000	250,000	500,000	1,000,000
Leaders in Group	2 x Rank 5	2 x Rank 6	2 x Rank 7	2 x Rank 8	2 x Rank 9	2 x Rank 10

Elite Rank Table



	Rank Diamond	Double Diamond	Black Diamond
PV (Personal Sales Volume)	50	50	50
Actives	10	15	25
PGV (Group Sales Volume)	2,500,000	5,000,000	10,000,000
Leaders in Group	2 x Rank 11	2 x Rank 12	2 x Rank Diamond

2 Million Rank Cash Bonuses

Rank	Bonus
B4	\$100
B5	\$500
B6	\$1,000
B7	\$2,500
B8	\$5,000
B9	\$10,000
B10	\$25,000
B11	\$50,000
B12	\$100,000
Diamond	\$250,000
Double Diamond	\$500,000
Black Diamond	\$1,000,000

Every Consultant at Tier 1000 Level is eligible to earn ~ \$2 Million in Rank Cash Bonuses. Every time you achieve a new monthly paid-as Rank that is higher than any previously achieved paid-as Rank, you will earn the 1-time Cash Rank Bonus that is listed in the table to the left.

Anytime a Consultant achieves 2 or more new paid-as rank advancements in any given month, will earn 100% of the highest Rank Bonus, and 50% of the next highest Rank Bonus. Maximum payout is 2 Rank Bonuses in any given month.

Terms, Conditions and Definitions

The only requirement to earn minimum levels of commissions and bonuses is the purchase of a Consultant Success kit (\$39.99). A First Order Package is optional. A monthly autoship order to maintain 'Active' status is also optional.

* PV (Personal Volume) - PV or Personal Sales Volume includes total Personal orders and Customer web sales purchased during the month. Total PV is calculated on the total USD spent on all product purchases. Shipping, Tax, Marketing Materials and Fees do not count for PV. A Consultant is considered 'Active' when there is 50 or more in PV. Being 'Active' allows the Consultant to be eligible for maximum commissions and bonuses.

** Active - This requirement is met by having personally sponsored Consultants who have purchased at least 50 PV during the month. If you have a personal monthly order of 50 or more PV, this counts as 1 Consultant. Up to half of this requirement can also be met by having personally sponsored Customers who have purchased at least 50 PV during the month. Thus, to be Rank 6, you can have 3 Active Customers, your personal order, and 2 Active Consultants. (See Rank Table). Consultants who are not active will be eligible for commissions and bonuses at the 'Kit Only' level listed in this document on page 2.

Optional Bands Set Sale for 3 Months of Active - Any Consultant that purchases a set of B3 Bands for purposes of Retail Selling, or has a Customer that has purchased a set of Bands from B3, will be qualified as 'Active' for 3 months starting with the month of the current order and 2 more consecutive months.

- Example: You have a Customer Order for a set of Bands in May. You are qualified as 'Active' for May, June and July.
- First Order Packages do not count towards the 3 Months or Active.
- Regardless of the # of Bands Sets orders in a month, or the # of Bands Sets in an Order, you are only qualified for 3 months when this occurs in a calendar month.

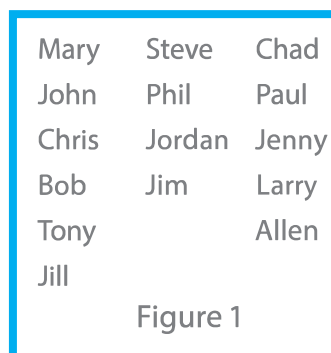
Bonus Volume (BV) - BV is the volume assigned to each product for the purpose of calculating Commissions. Training, Shipping Fees, Sales Tax, Sales Aids, Marketing Materials, and Success Kits do not carry BV.

Consultants at Entry Levels lower than Tier 1000 can Upgrade to a higher level by purchasing additional orders for Inventory or by accumulating Direct Web Customer Sales.

Unilevel or Personal Group - Each time you sponsor a new Consultant, this represents a new Line of enrollment. Then all the future Consultants that develop through that new Consultant are included in that line. This includes all Customers that are sponsored by a Consultant. The example in figure 1 represents you with 3 personally sponsored Consultants. Through additional sponsoring these 3 lines have developed into 15 total Consultants.

Personal Group Volume (PGV) – All the Personal Volume (PV) from all the orders in your Unilevel Tree or all your Lines of Enrollment to infinity. Example: There are 15 Consultants in your Unilevel and the total PV from all their orders is 1500 PV. Your PGV would be 1500.

Leaders in Group – Each Consultant you sponsor starts a new Line of Enrollment. To achieve Rank 4 and higher, you need 2 separate Lines of Enrollment to have a Consultant that has achieved the required Rank that is listed in the Rank Table. These Consultants that achieve this Rank do not need to be personally sponsored. They can be any where in a Line of Enrollment.



Example: 2 be Rank 6, you need two lines that have a Rank 4 or higher.

You Sponsor Mary who is a Rank 6

You sponsor Joe, who sponsors Pete, who sponsors Bill. Bill is a Rank 4.

This example represents at least 2 lines that have a Rank 4 or higher, meeting the qualifier for Rank 6. If Bill moves up to a Rank 6, then you would have 2 lines that have a Rank 6 or higher, meeting the qualifier for Rank 8.

The Price Volume Guide is located in the Consultant Office and will display PV and BV values for all products. All Bonuses and Commissions are only generated on the sales of consumable products. Training, Shipping, Tax, Marketing Materials, and Fees do not have PV or BV.

Monthly Commission Period - Runs from the first to the last day of the calendar month.

The Paid Rank you earn each month determines your Rank and the Commissions and Bonus levels you are eligible to receive for that month. Paid Rank does not carry forward; thus a Consultant must qualify for Paid Rank each month. Once a Consultant earns a Paid Rank, that Rank becomes their Title, and is maintained for 12 months for recognition purposes.

Eligibility for Sales Pools - Active Rule: Consultants must remain at Paid Rank 1 (Active) or higher on a monthly basis to be eligible for ongoing access to the Pools. If a Consultant is 'Not-Active' he/she will be given a 1 month grace and still be eligible for the Pools. If a Consultant is 'Not-Active' for a 2nd month, he/she forfeits access to the Pools forever.

Commissions are paid monthly. On the 10th of the following month, commissions for the previous month will be generated. Each Consultant that earns income will receive an email along with a statement with details of their earnings. Our payment company is PayQuicker. After commissions are generated, if you have \$50 or more in total commissions, your full amount will be paid to you through the PayQuicker program. If a Consultant has less than \$50 in their B3 Commissions Account, and they request to cancel their account, all their remaining commissions will be paid to them (Minus a Service Fee).

INCOME DISCLOSURE STATEMENT

B3 Sciences is a new company and the potential earnings for Independent Consultants cannot be determined until a multiyear track record for Consultant earnings are established. B3 Sciences nor its Consultants should never make representations or claims of specific incomes that can be earned unless the income is tied to specific examples of specific bonuses that are generated by specific sales of B3 products.

The Compensation Plan is subject to change at the sole discretion of 83 Sciences Inc. Changes will be posted Online in the 83 Consultant Back Office.

*For more information regarding how to use your B3 Band Exercise System
please visit our Website or refer to our videos on our YouTube page.*